

COPPER CABLE



COPPER CABLE CAT 6 F/UTP 24AWG PE - Fca



Application:

Outdoor application, Primary (Campus), Secondary (Riser), Tertiary (Horizontal), IEEE 802.3an: 10Base-T; 100Base-TX; 1000Base-T, IEEE 802.5 16 MB; ISDN; TPDDI; ATM, IEEE 802.3af-2002: POE; IEEE 802.3at: POE+; conforming to European regulation "CPR" EN 50575

Construction and characteristics:

Conductor:	Material	Bare Copper
	AWG Size	24 AWG – 0.52 ±0.01
	Filler	With "+" cross mould separate
Insulation:	Material	Solid PE
	Thickness	-
	Diameter	Nominal: 1.03 ±0.08mm x 2C Twist
	Pair colors	Bl/WhBl, Or/WhOr, Gr/WhGr, Br/WhBr
	Unaged Elongation	-
	Unaged Tensile Strength	-
Screen	Material	Total Mylar Spiral ≥115% - Al-Pet Shielded ≥115%
Drain Wire	Material	Tinner Copper T 0.40 ±0.008mm
Jacket:	Material	PE – CPR Fca
	Thickness	-
	Diameter	Nominal: 7.20 ±0.20 mm
	Color	Black
	Unaged Elongation	-
	Unaged Tensile Strength	-
	Aging at 100°C for 168h	-
Marking	On cable (black – one per meter)	CABLE F/UTP Cat.6 250MHz 4PxAWG24 PE Fca – 211313-00 - ISO/IEC 11801 ANSI/TIA-568-C.2 - CEI UNEL 36762 (C-4 - Uo=400V) - <batch no.> <dd/mm/yy> <meter> m

Reference Standard

ISO/IEC 11801-1:2017(Ed. 1.0) / ISO/IEC 11801-2:2017(Ed. 1.0);

EN 50173-1:2018 / EN 50173-2:2018

IEC 61156-5:2012 (Ed.2.1);

EN 50288-5-1:2013;

TIA-568.2-D:2018;

CEI UNEL 36762 (C-4 - U₀=400V)

Electrical Characteristics and Performance

Freq. (MHz)	Attenuation (dB/100m) Max.	NEXT (dB) Min.	PSNEXT (dB) Min.	Ret. Loss (dB) Min.	ACR-F (dB/100m) Min.	PSACR-F (dB/100m) Min.	ACR-N (dB/100m) Min.	PSACR-N (dB/100m) Min.
4	3,8	66,3	63,3	23,0	56,0	53,0	62,4	59,4
10	6,0	60,3	57,3	25,0	48,0	45,0	54,3	51,3
16	7,6	57,2	54,2	25,0	43,9	40,9	49,6	46,6
20	8,5	55,8	52,8	25,0	42,0	39,0	47,3	44,3
31,25	10,7	52,9	49,9	23,6	38,1	35,1	42,1	39,1
62,5	15,5	48,4	45,4	21,5	32,1	29,1	32,9	29,9
100	19,9	45,3	42,3	20,1	28,0	25,0	24,4	22,4
155	25,3	42,4	39,4	18,8	24,2	21,2	17,1	14,1
175	27,1	41,7	38,7	18,4	23,1	20,1	14,6	11,6
200	29,1	40,8	37,8	18,0	22,0	19,0	11,6	8,6
250 (*)	33,0	39,3	36,3	17,3	20,0	17,0	6,3	3,3

(*) Data above 250MHz is for reference only.

Max.Conductor DC Resistance at 20°C (Ω/Km)	<97,6
Rated Temperature(°C)	60
Velocity ratio	70%
Operating Temperature(°C)	-40/70
Impedance(Ω)	1-100MHz – (100±15) 100-250MHz – (100±20)

Ordering information code

OC-CVR-211313-00

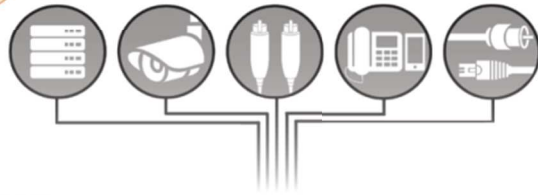
ORCA - COPPER CABLE CAT 6 F/UTP PE – Fca - Black



CE
orca®
19 DoP No. 190018 EN50575: 2014 OC-CVR-211313-00
<p>Supply of electricity and communications in buildings and other civil engineering works with the objective of limiting the generation and spread of fire and smoke.</p> <p>Reaction to Fire: Fca Dangerous Substance: None</p>  <p>www.orca.it</p>

OC-CVR-211313-00

Cable Category 6 FUTP PE 500m
 Cavo Categoria 6 FUTP PE 500m
 Câble Catégorie 6 FUTP PE 500m
 Cable Categoria 6 FUTP PE 500m
 Kabel Kategorie 6 FUTP PE 500m



thank you for choosing ORCA Networking

VERIFIED PERFORMANCES
 OF ANSI/TIA-568-C.2, ISO/IEC 11801