

COPPER CABLE



# COPPER CABLE CAT 6 UTP

## 24AWG LSZH - Eca

<b>CAT 6</b>	<b>U/UTP</b>	<b>AWG 24</b>	<b>LSZH</b>	<b>Eca</b>	<b>INDOOR</b>	<b>BOX 305</b>
--------------	--------------	---------------	-------------	------------	---------------	----------------

**Application:**

Primary (Campus), Secondary (Riser), Tertiary (Horizontal), IEEE 802.3an: 10Base-T; 100Base-TX; 1000Base-T, IEEE 802.5 16 MB; ISDN; TPDDI; ATM, IEEE 802.3af-2002: POE; IEEE 802.3at: POE+; conforming to European regulation "CPR" EN 50575

COPPER CABLE		
Conductor:	Material	Bare Copper
	AWG Size	24 AWG – 0.51 ±0.01
	Filler	With "+" cross mould separate
Insulation:	Material	HDPE
	Thickness	0.21mm
	Diameter	Nominal: 0.92 ±0.08mm x 2C Twist
	Pair colors	Bl/WhBl, Or/WhOr, Gr/WhGr, Br/WhBr
	Unaged Elogation	-
	Unaged Tensile Strength	-
Screen	Material	-
Drain Wire	Material	-
Jacket:	Material	LSZH – CPR Eca
	Thickness	Nominal: 0.55mm
	Diameter	Nominal: 5.60 ±0.20 mm
	Color	Cream (RAL-9001)
	Unaged Elogation	-
	Unaged Tensile Strength	-
	Aging at 100°C for 168h	-
Marking	On cable (black – one per meter)	CABLE U/UTP Cat.6 250MHz 4PxAWG24 LSZH Eca – 212013-62 - ISO/IEC 11801 ANSI/TIA-568-C.2 <batch no.> <dd/mm/yy> <meter> m

### Reference Standard

ISO/IEC 11801-1:2017(Ed. 1.0) / ISO/IEC 11801-2:2017(Ed. 1.0);	EN 60332-1-2 (Fire Performance)
EN50173-1:2018 / EN 50173-2:2018	EN61034-2 (Smoke Density)
IEC61156-5:2012 (Ed.2.1);	EN60754-2 (Halogen Free)
EN50288-6-1:2013;	EN 50575 (Reaction to fire)
ANSI/TIA-568.2-D:2018;	CEI UNEL 36762 (C-4 - Uo=400V)

### Electrical Characteristics and Performance

Frequency	ATTENUATION	NEXT	PSNEXT	RETURN LOSS	ACR-F	PSACR-F	ACR-N	PSACR-N
(MHz)	(dB/100m) Max.	(dB) Min.	(dB) Min.	(dB) Min.	(dB/100m) Min.	(dB/100m) Min.	(dB/100m) Min.	(dB/100m) Min.
4	3,8	66,3	63,3	23,0	56,0	53,0	62,4	59,4
10	6,0	60,3	57,3	25,0	48,0	45,0	54,3	51,3
16	7,6	57,2	54,2	25,0	43,9	40,9	49,6	46,6
20	8,5	55,8	52,8	25,0	42,0	39,0	47,3	44,3
31,25	10,7	52,9	49,9	23,6	38,1	35,1	42,1	39,1
62,5	15,5	48,4	45,4	21,5	32,1	29,1	32,9	29,9
100	19,9	45,3	42,3	20,1	28,0	25,0	25,4	22,4
155	25,3	42,4	39,4	18,8	24,2	21,2	17,1	14,1
175	27,1	41,7	38,7	18,4	23,1	20,1	14,6	11,6
200	29,1	40,8	37,8	18,0	22,0	19,0	11,6	8,6
250(*)	33,0	39,3	36,3	17,3	20,0	17,0	6,3	3,3

(\*) Data above 250MHz is for reference only.

Max.Conductor DC Resistance at 20°C ( $\Omega$ /Km)	<101.1
Operating Temperature Range (°C)	-25/70
Rated Temperature (°C)	60
Velocity ratio	70%
Impedance ( $\Omega$ )	1-100MHz – (100±15) 100-250MHz – (100±20)

### Ordering information code

OC-CVR-212013-62

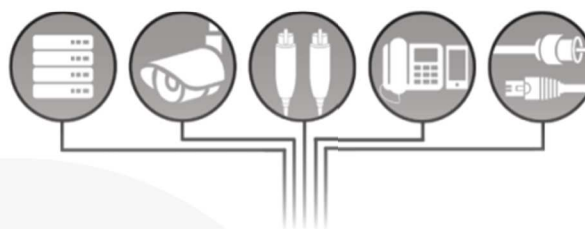
ORCA - COPPER CABLE CAT 6 U/UTP LSZH - Eca - Cream

 1014 Identification Number

21 DoP No.18116E EN50575: 2014 OC-CVR-212013-62
Supply of electricity and communications in buildings and other civil engineering works with the objective of limiting the generation and spread of fire and smoke.  <b>Reaction to Fire: Eca</b> <b>Dangerous Substance: None</b>   <a href="http://www.orca.it">www.orca.it</a>

# OC-CVR-212013-62

Cable Category 6 UTP LSZH 305m  
 Cavo Categoria 6 UTP LSZH 305m  
 Câble Catégorie 6 UTP LSZH 305m  
 Cable Categoria 6 UTP LSZH 305m  
 Kabel Kategorie 6 UTP LSZH 305m



thank you for choosing ORCA Networking

VERIFIED PERFORMANCES  
 OF TIA/EIA-568, ISO/IEC 11801