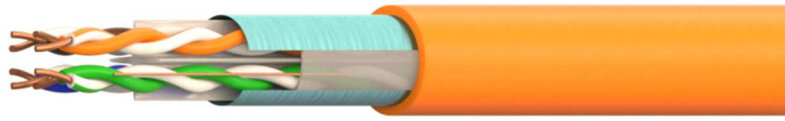


COPPER CABLE



# COPPER CABLE CAT 6A U/UTP ALIEN NEXT PROOF 23AWG LSZH – Dca



**Application:**

Primary (Campus), Secondary (Riser), Tertiary (Horizontal), IEEE 802.3an: 10Base-T; 100Base-TX; 1000Base-T, 10Gb, IEEE 802.5 16 MB; ISDN; TPDDI; ATM, IEEE 802.3af-2002: POE; IEEE 802.3at: POE+; conforming to European regulation "CPR" EN 50575

Construction and characteristics:		
Conductor:	Material	Bare Copper
	AWG Size	23 AWG – 0.57 ±0.01
	Filler	With "+" cross mould separate
Insulation:	Material	HDPE
	Thickness	Nominal: 0.29 mm
	Diameter	Nominal: 1.11 ±0.08mm x 2C Twist
	Pair colors	Bl/WhBl, Or/WhOr, Gr/WhGr, Br/WhBr
	Unaged Elongation	-
	Unaged Tensile Strength	-
	Alien Next Proof	Material
Drain Wire	Material	-
	Material	LSZH – CPR Dca (s2,d2,a1)
Jacket:	Thickness	Nominal: 0.55 mm
	Diameter	Nominal: 7.40 ±0.20 mm
	Colour	Orange (RAL-2009)
	Unaged Elongation	-
	Unaged Tensile Strength	-
	Aging at 100°C for 168h	-
	Marking	On cable (black – one per meter)

### Reference Standard

ISO/IEC 11801-1:2017(Ed. 1.0) / ISO/IEC 11801-2:2017(Ed. 1.0);	EN 60332-1 (Fire Performance)
EN50173-1:2018 / EN 50173-2:2018;	EN61034 (Smoke Density)
IEC61156-5:2012 (Ed.2.1);	EN60754 (Halogen Free)
EN50288-10-1:2012;	EN 50399, EN 50575 (Reaction to fire)
ANSI/TIA-568.2-D:2018;	

### Electrical Characteristics and Performance




Frequency (MHz)	Attenuation (dB/100m) Max.	NEXT (dB) Min.	PSNEXT (dB) Min.	Return loss (dB) Min.	ACR-F (dB/100m) Min.	PSACR-F (dB/100m) Min.	ACR-N (dB/100m) Min.	PSACR-N (dB/100m) Min.
4,0	3,8	66,3	63,3	23,0	56,0	53,0	62,5	59,5
10,0	5,9	60,3	57,3	25,0	48,0	45,0	54,4	51,4
16,0	7,5	57,2	54,2	25,0	43,9	40,9	49,8	46,8
31,25	10,5	52,9	49,9	23,6	38,1	35,1	42,4	39,4
62,5	15,0	48,4	45,4	21,5	32,1	29,1	33,4	30,4
100,0	19,1	45,3	42,3	20,1	28,0	25,0	26,2	23,2
250,0	31,1	39,3	36,3	17,3	20,0	17,0	8,3	5,3
500,0(*)	45,3	34,8	31,8	17,3	14,0	11,0	-10,4	-13,4

(\*) Data above 500MHz is for reference only.

Max. Conductor DC Resistance at 20°C (Ω/Km)	<83
Rated Temperature(°C)	60
Velocity ratio	70%
Operating Temperature(°C)	-25/70
Impedance (Ω)	1-100MHz – (100±15)
	100-250MHz – (100±20)
	250-500MHz – (100±25)

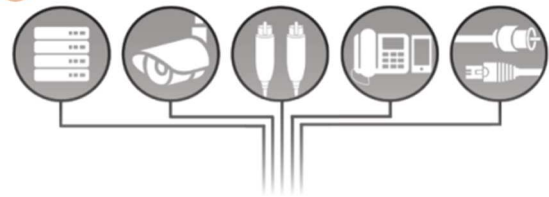
### Ordering information code

OC-CVR-212215-22 ORCA - COPPER CABLE CAT 6A U/UTP LSZH - Dca - Orange

 1014

18 DoP No. 180076 EN50575: 2014 OC-CVR-212215-22
<p>Supply of electricity and communications in buildings and other civil engineering works with the objective of limiting the generation and spread of fire and smoke.</p> <p>Reaction to Fire: Dca, s2, d2, a1          Dangerous Substance: None</p> <div style="text-align: center;">   <a href="http://www.orca.it">www.orca.it</a> </div>

# OC-CVR-212215-22

Cable Category 6A UTP LSZH 500m  
 Cavo Categoria 6A UTP LSZH 500m  
 Câble Catégorie 6A UTP LSZH 500m  
 Cable Categoria 6A UTP LSZH 500m  
 Kabel Kategorie 6A UTP LSZH 500m



thank you for choosing ORCA Networking

VERIFIED PERFORMANCES  
 OF ANSI/TIA-568-C.2, ISO/IEC 11801

